



# NC 150/150D

Horizontal Steam Sterilizers



**N-smart**

# NC 150/150D

## HORIZONTAL STEAM STERILIZERS

NC 150/150D Horizontal Steam Sterilizer is designed for the sterilization of textile, wrapped or packed materials, glass and liquid in operating theatres and laboratories of hospitals; dentistry; biology, veterinary and agriculture departments of universities; microbiology and quality control laboratories of industry such as food.

With its double doors, NC 150D is an ideal solution for the small sterilization centers which have divided into clean and dirty areas.

### VERSATILE OPERATING SYSTEM

- Integrated steam generator for fast production of steam
- Maintenance-free diaphragm type powerful vacuum pump
- Fractionated pre-vacuum to eliminate all air bubbles and achieve successful steam penetration
- Fractionated post-vacuum for efficient drying of the samples
- Air driven gasket with internal compressor
- Pressure measurement of gasket
- Connected directly to water supply through siliphos filter supplied.
- Delivered with shelf carrier and shelves
- Sterilization quality matching the needs of EN 285 European Standard for Large Steam Sterilizers
- Pre-heated chamber to eliminate condensation on the chamber walls and speed up the heating of the samples





## RELIABLE AND POWERFUL CONTROL SYSTEM: N-Smart™

- Maximum information with highly visible 4,3" colourful LCD display
- Four context-sensitive function keys for versatile & easy to use
- Password protected menu to secure run parameters and data
- Easy to understand 5 Languages: Turkish, English, French, Russian, Spanish
- Icons make the operations easier for immediate understanding

## EASY STERILIZATION

- Seven pre-set programs which guarantee safe sterilization of the treated material

Resistant textile	136°C	20 minutes
Wrapped porous	134°C	20 minutes
Prion	134°C	20 minutes
Quick, unwrapped	134°C	4 minutes
Resistant rubber	121°C	20 minutes
Sensitive material	121°C	20 minutes
Gravity	121°C	20 minutes

- Programmable ten free programs:

Temperature :	105°C - 136°C
Sterilization time:	1 - 99 minutes
No. of pre vacuum:	1 - 4
Drying time:	1-30 minutes

- Two special programs for liquid sterilization and drying
- Programmable pre-heating

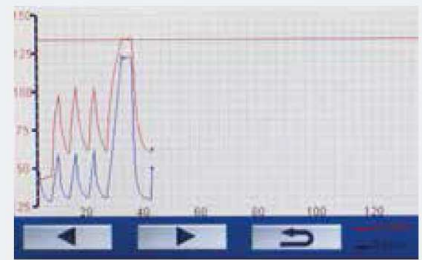


## TEST PROGRAMS

- Vacuum leakage test and Bowie & Dick test

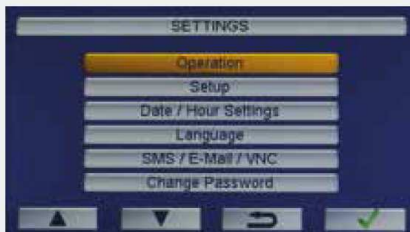
## FULL TRACEABILITY AND REMOTE ACCESS

- Operating parameters can be tracked graphically against time
- Massive data storage with internal memory which stores the records of last 500 cycles detailed and 29.500 cycles as summary
- Memory for the last 100 failures
- USB port to record the operated cycles in the memory to a memory stick
- Possibility of printer connection through USB / RS 232 port for printing the cycles in the memory or connection to PC
- Ethernet port for remote access through internet by means of optional NüveCloser™ software
- NüveCloser™ allows to access operating parameters, memory ,failure history and other technical parameters
- Panel type printer to keep the records of the sterilization cycle



OLDER CYCLES				
NO	DATE	TIME	PROGRAM	ERROR
00001	22.09.15	12:16	Bowie & Dick/Hex	✓ ---
00002	22.09.15	09:51	Sensitive	✓ ---
00003	22.09.15	09:11	Vacuum Test	✓ ---
00004	21.09.15	16:26	Prion	✓ ---
00005	21.09.15	13:56	Sensitive	✓ ---

Navigation buttons: up arrow, down arrow, circular arrow, and checkmark.



**NUVE**

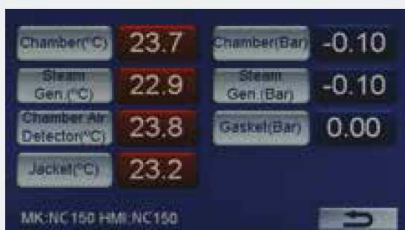
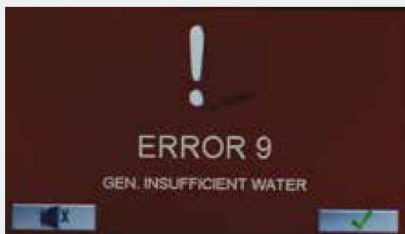


## PROCESS EVALUATION AND SELF DIAGNOSTIC SYSTEM

- Compare the preset values with operating parameters using the process evaluation system
- When the operating parameters do not match the preset values, the sterilization cycle is cancelled and the user is warned
- Comprehensive self-diagnostic system for 19 possible failures such as power failure, heater failure, low water level, high pressure and temperature, sensor failure

## SAFETY OVER STANDARDS

- Password protected control system, service and calibration menu
- Lid safety system
- Colour of the display changes to red in case of any alarm condition along with an audible alarm
- Reminder for gasket and filter replacement
- Remote failure diagnostic by means of NüveCloser™ software
- Sending e-mails up to five e-mail addresses with the details of failure
- Optional AlerText™ SMS alarm system for ultimate security
- Safety valve against over pressure
- HEPA filter at air intake line
- Certified chamber and generator according to PED 2014/68
- Validation port as standard



## TECHNICAL SPECIFICATIONS

	NC 150	NC 150D
Chamber Volume, litres	170	150
Sterilization Temperature	105-136°C	
No of Preset Programs	7	
No of Free Programs	10	
Special Programs	Liquid Sterilization and Drying	
Test Programs	Vacuum Leakage, Bowie & Dick	
Minimum Vacuum Level	200 mbar	
Control System	N-Smart™ Control System	
Display	4,3" Colourful LCD Display	
Internal Material	Stainless Steel	
External Material	Stainless Steel and Epoxy Polyester Powder Coated Stainless Steel	
Standard Accessories	Shelf Carrier and 6 Shelves (4 pcs. 420x740 mm, 1 pc. 275x740 mm, 1pc. 330x740 mm)	
Power Consumption	11,500 W	
Power Supply	400 V 50/60 Hz, 3 phases + N + G	
Chamber Dimensions (DiaxD) mm.	Ø 496x880	Ø 496x777
External Dimensions (WxDxH) mm.	670x1010x1580	670x1030x1580
Packing Dimensions	880x1300x1780	
Net / Packed Weight kg.	300 / 390	342 / 402

### FACTORY FITTED OPTION

- A 08 209 Loading cart for shelf and STU carrier
- A 08 210 STU carrier and 1 pc. STU

### OPTIONS

- A 08 191 AlerText™ GSM alarm module
- A 08 213 NuveCloser™ Software CD with 3 m. RS 232 cable



ISO 9001: 2008  
ISO 13485: 2003

