

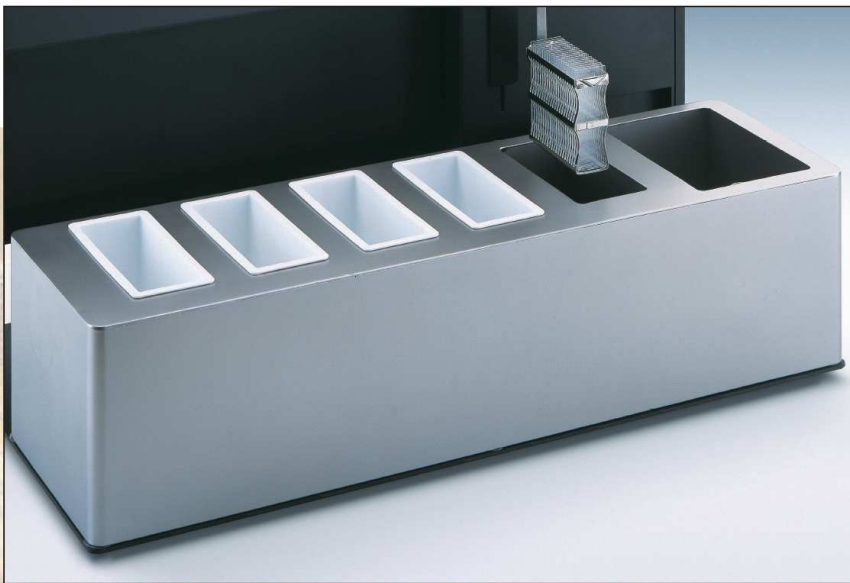


# POLY STAINER

**iUL**  
INSTRUMENTS

### Protected electronic

All the electronic circuit and electrical components are built in an elevated bridge. No splashing can damage them.

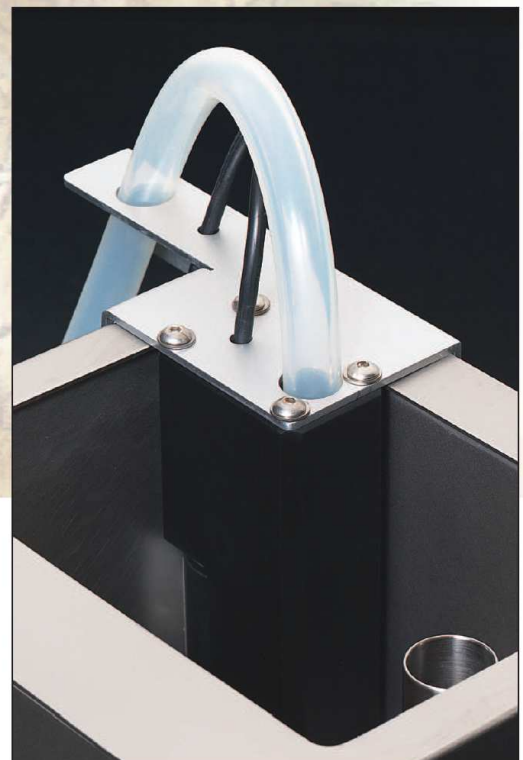


### Removable container tray

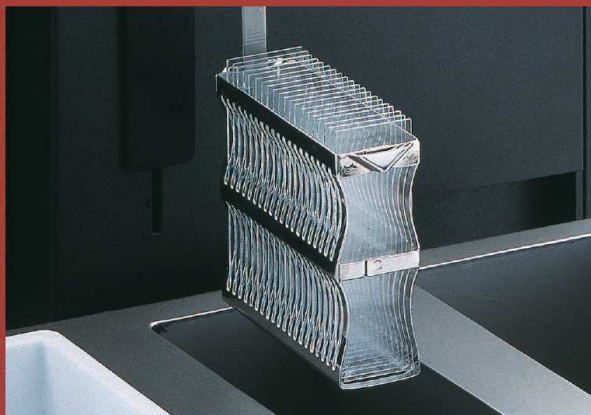
The stainless steel container tray, can be easily removed and replaced without any tool.

### Quick drain system

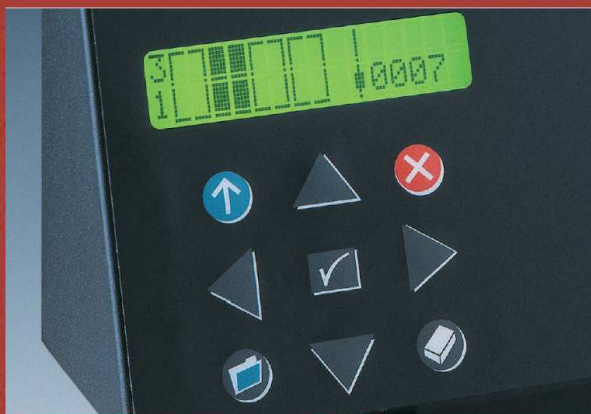
As optional accessory the quick drain system allows to empty out the water container from the bottom. In the normal situation the water overflows.



Arrange the slides in the basket and hang it on the lift.



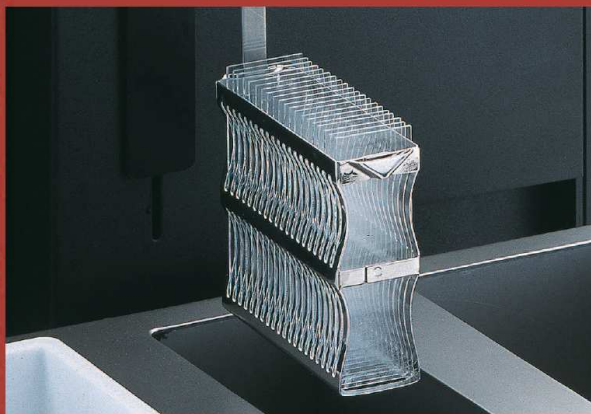
Perform or select a program using the symbolic display/keyboard.



The basket runs automatically to all the selected positions, at the times and shaking required.



Once the program finished, take the basket at the rest position.



## Features and operation

## TECHNICAL DATA

Slides per basket:	Up to twenty
Containers for reagents:	Four
Rinse water bath :	One with overflow. Optional bottom drain can be installed.
Drying container:	12°C-15°C higher that the room temperature.
Programming:	Time to dip the basket in each container. During this time, resting periods and shaking periods. Time to maintain the basket on top of each container after dipping.
Number of programs:	The memory can store up to ten programs
Positions per program:	The basket can go to ten different positions. At each of them the total dipping time, resting and shaking, and drain over the container can be selected.

Mains: 100/240 V, 50/60 Hz, 250 W

Dimensions (LxWxH): 700x 440x400 mm

Weight: 23 Kg

## ORDERING INFORMATION

### Cat.No.

Basic unit includes one slide basket and four plastic containers with lid.

Specify mains required (the Cat. No. may change)	5300
Quick drain system. Optional	5310
Stainless steel container tray (one comes with the basic unit)	5438
Basket for slides (one comes with the basic unit)	5417



6095R01 May-08

# Information